

# COVID-19: Data Update for Leicestershire

Week 41

20<sup>th</sup> October 2020

Strategic Business Intelligence Team  
Business Intelligence  
Chief Executive's Department  
Leicestershire County Council  
County Hall, Glenfield  
Leicester LE3 8RA

Tel                   0116 305 4266  
Email:             [natalie.davison@leics.gov.uk](mailto:natalie.davison@leics.gov.uk)

Produced by the Strategic Business Intelligence Team at Leicestershire County Council.

Whilst every effort has been made to ensure the accuracy of the information contained within this report, Leicestershire County Council cannot be held responsible for any errors or omission relating to the data contained within the report.

# What have we learnt from the newly released Covid-19 data?

A series of publicly available dashboards examining Covid-19 cases, deaths involving Covid-19 and a district summary are available at the below links. A summary narrative to support the data in these dashboards then follows.

- [Deaths involving Covid-19](#)
- [Covid-19 Summary at District Level](#)
- [PHE Weekly Covid-19 Cases](#)

## 1. One death<sup>1</sup> involving Covid-19 was recorded in Leicestershire in the last week.

- As of week 41 2020 (up to 9<sup>th</sup> October), there have been a total of 550 deaths in Leicestershire. The number of weekly counts of deaths has remained the same at one death since the previous week.
- Of all deaths involving Covid-19 in Leicestershire, 340 (61.8%) were in hospital and 172 (31.3%) were in a care home.
- In week 41, there was one death in a hospital in the past week, this occurred in Melton.

---

<sup>1</sup> Death counts are based on death occurrences. The death is counted as involving Covid-19 if Covid-19 was mentioned on the death certificate. Please note, Covid-19 may not have been confirmed by a test. Source: [Office for National Statistics](#) (2019)

## Deaths (numbers) by local authority and place of death, for deaths that occurred up to 9th October but were registered up to 17<sup>th</sup> October.

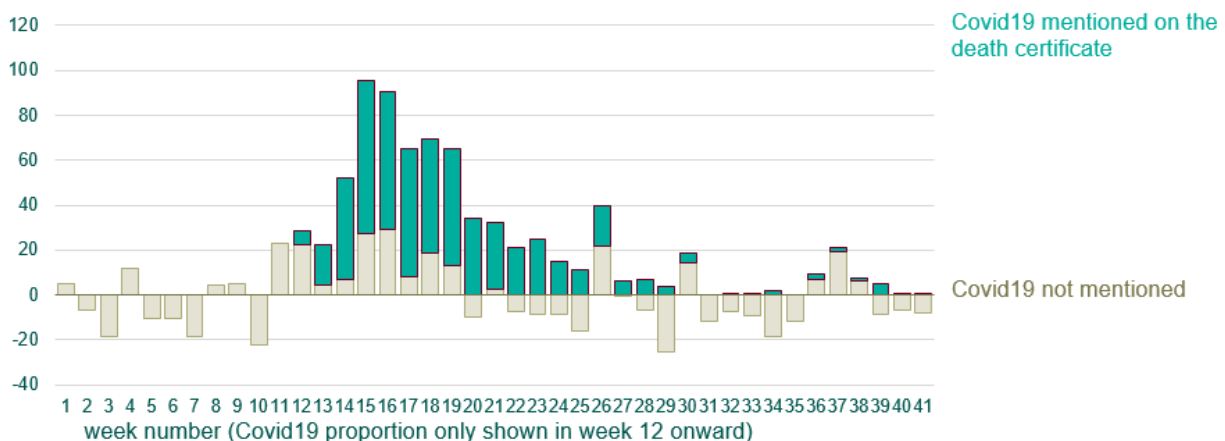
	Care Home		Elsewhere		Home		Hospice		Hospital		Total				Population
	Count	Rate	Count	Rate	Count	Rate	Count	Rate	Count	Rate	Count	Rate	LCI	UCI	
Blaby	21	20.9	1	1.0	4	4.0	1	1.0	58	57.8	85	84.6	67.6	104.7	100421
Charnwood	40	21.9	1	0.5	3	1.6	4	2.2	79	43.3	127	69.5	58.0	82.7	182643
Harborough	22	23.8	0	0.0	4	4.3	1	1.1	37	40.0	64	69.2	53.3	88.4	92499
H&B	41	36.5	0	0.0	4	3.6	5	4.4	58	51.6	108	96.1	78.8	116.0	112423
Melton	17	33.3	0	0.0	2	3.9	0	0.0	16	31.3	35	68.5	47.7	95.3	51100
NWLeics	15	14.7	0	0.0	5	4.9	1	1.0	46	45.0	67	65.6	50.8	83.3	102126
O&W	16	28.0	2	3.5	0	0.0	0	0.0	46	80.6	64	112.2	86.4	143.2	57056
Leicestershire	172	24.6	4	0.6	22	3.2	12	1.7	340	48.7	550	78.8	72.3	85.6	698268
Rutland	8	20.2	0	0.0	3	7.6	2	5.0	11	27.7	24	60.5	38.7	90.0	39697
Leicester City	76	21.4	13	3.7	20	5.6	2	0.6	227	63.9	338	95.2	85.3	105.9	355218
LLR	256	23.4	17	1.6	45	4.1	16	1.5	578	52.9	912	83.4	78.1	89.0	1093183

## 2. No excess deaths were recorded in the last week in Leicestershire

- Counts of excess deaths in Leicestershire have shown a declining trend (albeit with a small blips in week 30, week 36 and week 37), there was an increase in all deaths seen in week 41 compared to the previous week. The latest figures from ONS show that 125 deaths occurred in Leicestershire in week 41 of 2020. There have been no excess deaths reported in the last week.
- The latest weeks data shows there was one death that mentioned Covid-19 on the death certificate in week 41.

Weekly provisional figures on deaths occurring, minus the weekly average (2015 to 2019) plus death counts where coronavirus (COVID-19) was mentioned on the death certificate

### Leicestershire



### Covid-19 - Weekly occurrences

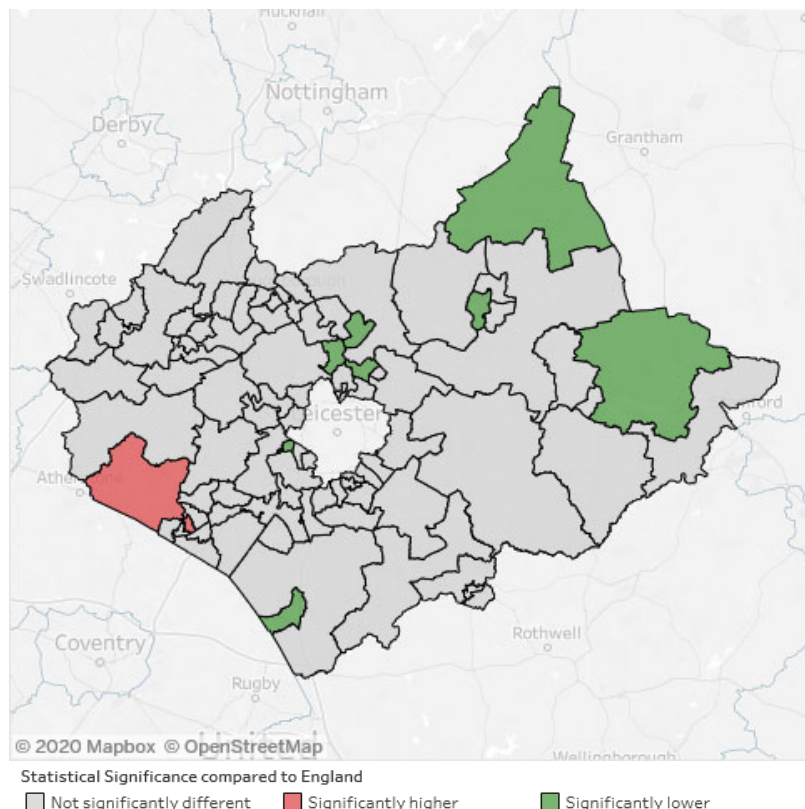
Based on a chart by David Spiegelhalter

<https://www.ons.gov.uk/peoplepopulationandcommunity/birthsdeathsandmarriages/deaths/datasets/weeklyprovisionalfiguresondeathsregisteredinenlandandwales>

### 3. Two areas in Hinckley and Bosworth have a significantly higher percentage of deaths involving Covid-19 than the national percentage

- The map below examines the statistical significance compared to England, of the percentage of deaths involving Covid-19 by Middle Layer Super Output Area (MSOA) in Leicestershire and Rutland. These deaths occurred between 1<sup>st</sup> March and 31<sup>st</sup> July 2020 and were registered by 15<sup>th</sup> August 2020.
- Stoke Golding, Higham and Fenny Drayton in Hinckley and Bosworth recorded 16 deaths involving Covid-19 in this time period, this represented 38.1% of all deaths. Hinckley Central, also in Hinckley and Bosworth recorded 20 deaths involving Covid-19 and represented 32.3% of all deaths. Nationally, deaths involving Covid-19 made up under a quarter (20.2%) of all deaths.
- Eight MSOAs in Leicestershire and Rutland have a significantly lower percentage of deaths involving Covid-19 compared to England. These are:
  - Bottesford, Harby & Croxton Kerrial in Melton (4, 8.5%)
  - Lutterworth in Harborough (4, 7.8%)
  - Mountsorrel & Rothley in Charnwood (3, 7.1%)
  - Sileby in Charnwood (1, 3.6%)
  - Syston West in Charnwood (1, 3.4%)
  - Leicester Forest East in Blaby (1, 3.3%)
  - Market Overton, Cottesmore and Empingham in Rutland (0, 0.0%)
  - Melton Mowbray West in Melton (1, 2.4%)
- Further data examining deaths involving Covid-19 by local area is available in the dashboard available at [this link](#).

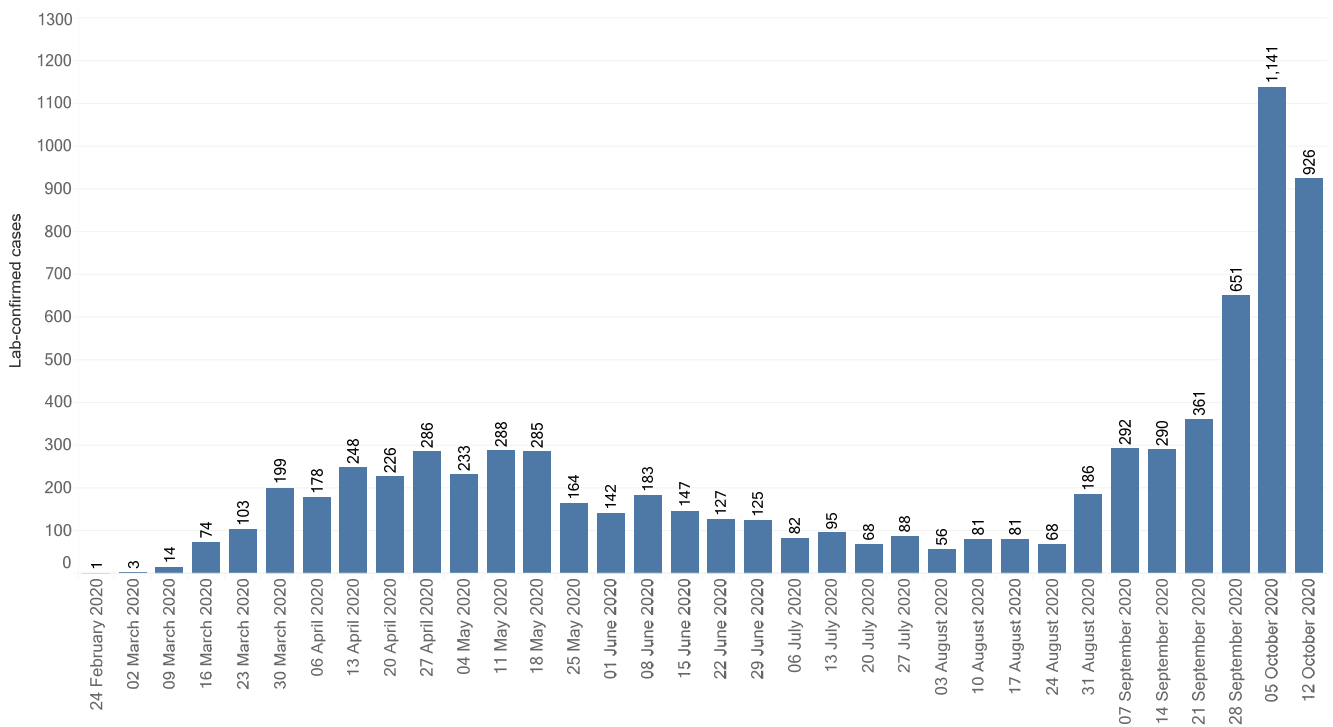
#### Statistical Significance compared to England of the deaths involving Covid-19 by Middle Layer Super Output Area, Leicestershire and Rutland, deaths occurring between 1<sup>st</sup> March 2020 and 31<sup>st</sup> July 2020



## 4. Weekly counts of cases have decreased in the past week in Leicestershire

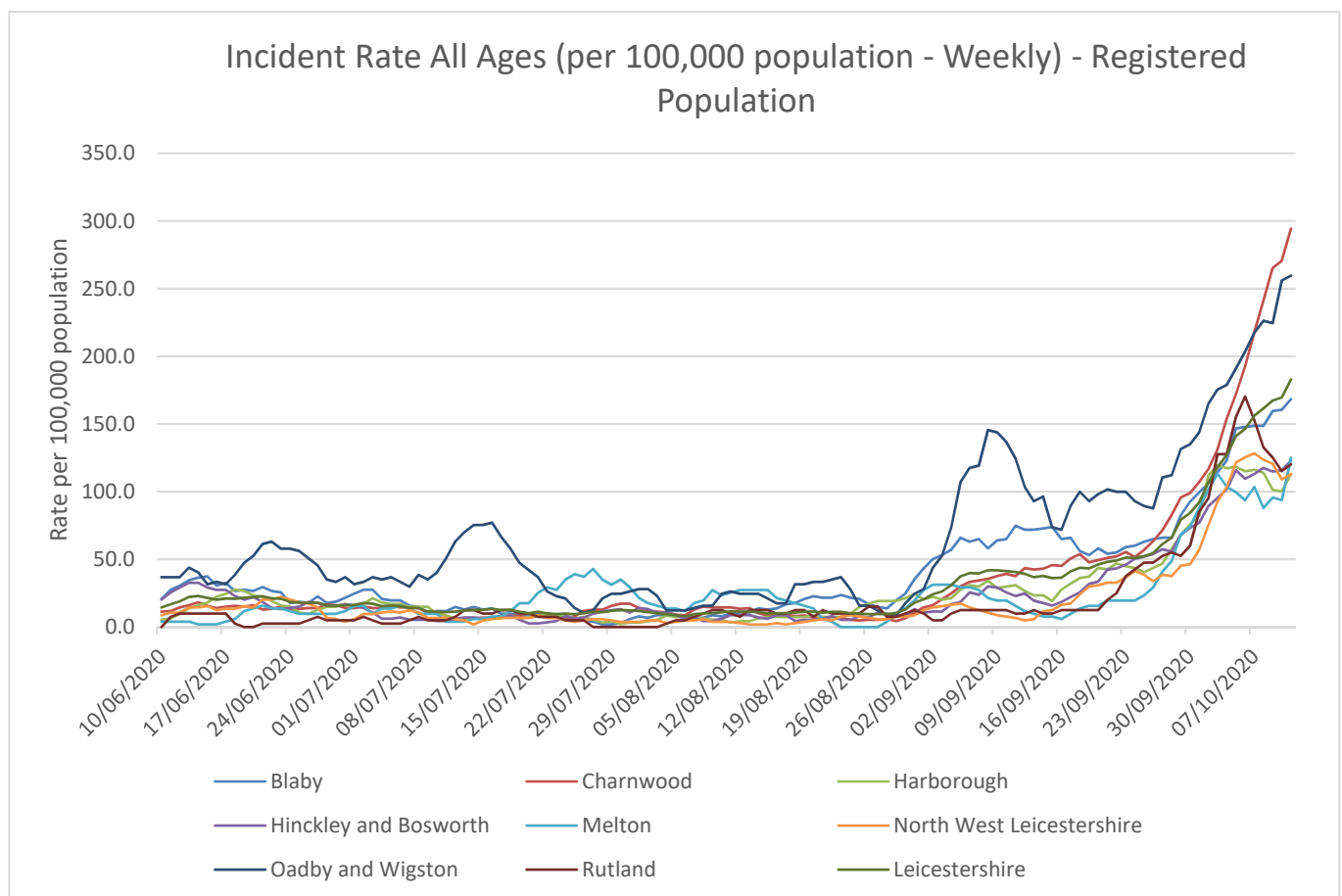
NOTE: The methodology for reporting positive cases changed on 2<sup>nd</sup> July 2020 to remove duplicates within and across pillars 1 and 2, to ensure that a person who tests positive is only counted once. Due to this change, all historic data has now been revised. Numbers of lab-confirmed positive cases now include those identified by testing in all settings (pillars 1 and 2)

- As of 18<sup>th</sup> October, Leicestershire has recorded a total of 7,492 lab-confirmed cases of Covid-19. This data relates to pillar 1 and 2 cases.
- The weekly aggregation of daily cases in Leicestershire shows the counts of cases showed an increasing trend throughout March and April. A peak in weekly counts was witnessed between the end of April and middle of May. Counts of cases had been showing a decreasing trend from the middle of May towards the beginning of August. An increase in the counts of cases has been witnessed from the end of August and throughout September. A peak in the counts of cases occurred at the beginning of October and has since decreased in the last week.
- The latest weekly data shows 926 cases have been confirmed in Leicestershire in the last week. This count has decreased compared to the previous week where 1,141 cases were confirmed.



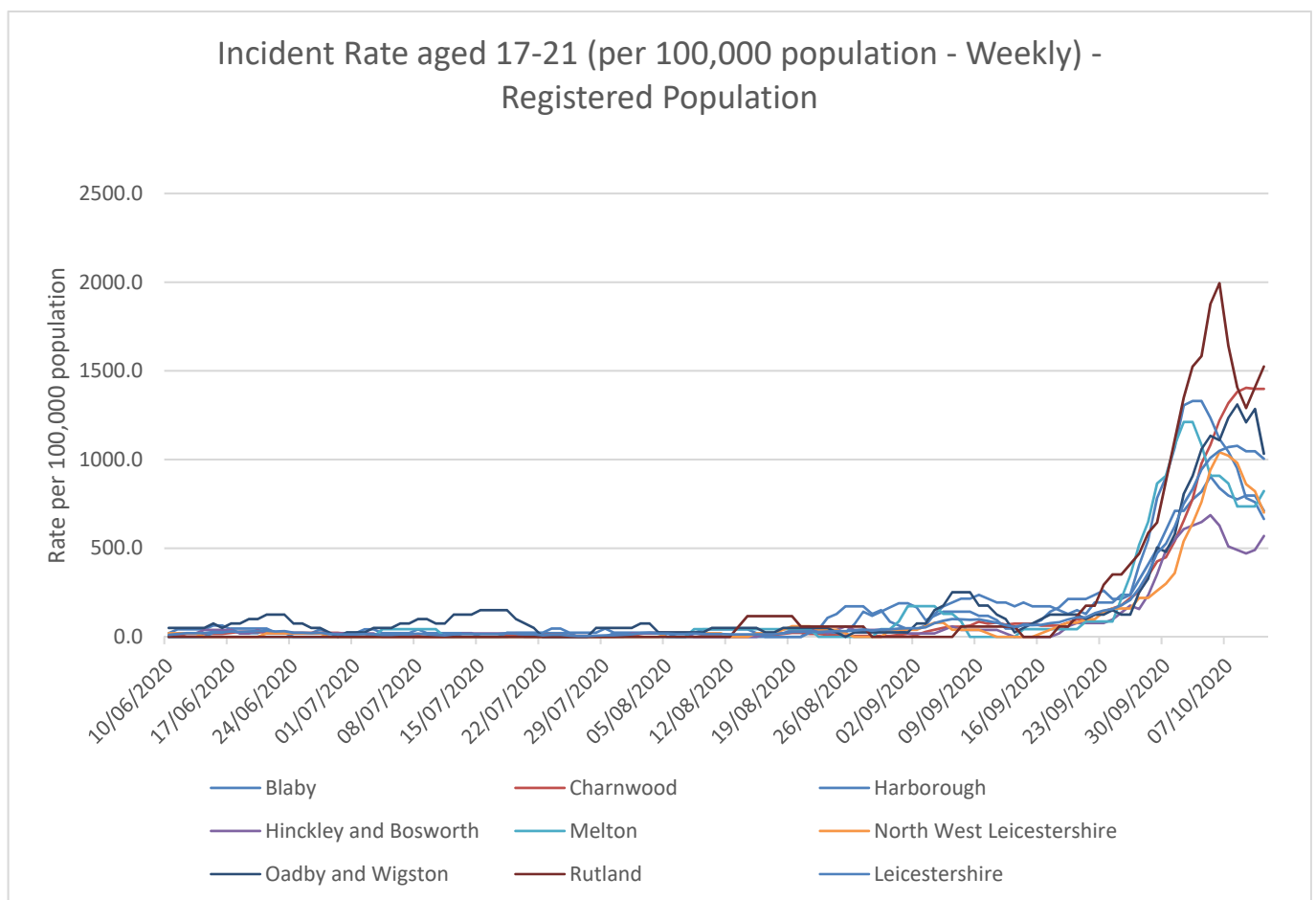
## 5. Charnwood and Oadby and Wigston have the highest weekly incidence rates of Covid-19 cases for people all ages in the county

- The incidence rate for Covid-19 cases in Leicestershire has been increasing since mid-September. The incidence rate in Leicestershire is now higher (183.0 per 100,000 population) than the national rate of (168.7 per 100,000 population) as of 11<sup>th</sup> October, it should be noted that the national rate has also continued to increase.
- There have been five peaks in the incidence rate for Covid-19 in Oadby and Wigston, one around mid-July, three smaller ones through August and one in mid-September. Charnwood has witnessed one peak in the incidence rate for Covid-19 around mid-September.
- The latest weekly incidence rate (as of 11<sup>th</sup> October) shows that Charnwood (294.3 per 100,000 population) and Oadby & Wigston (259.6 per 100,000 population) have higher rates than the national (168.7 per 100,000). This equates to 547 and 148 confirmed cases respectively in the last week for each of these districts.



## 6. Charnwood and Oadby and Wigston have the highest weekly incidence rates of Covid-19 cases for people aged 17-21 in the county.

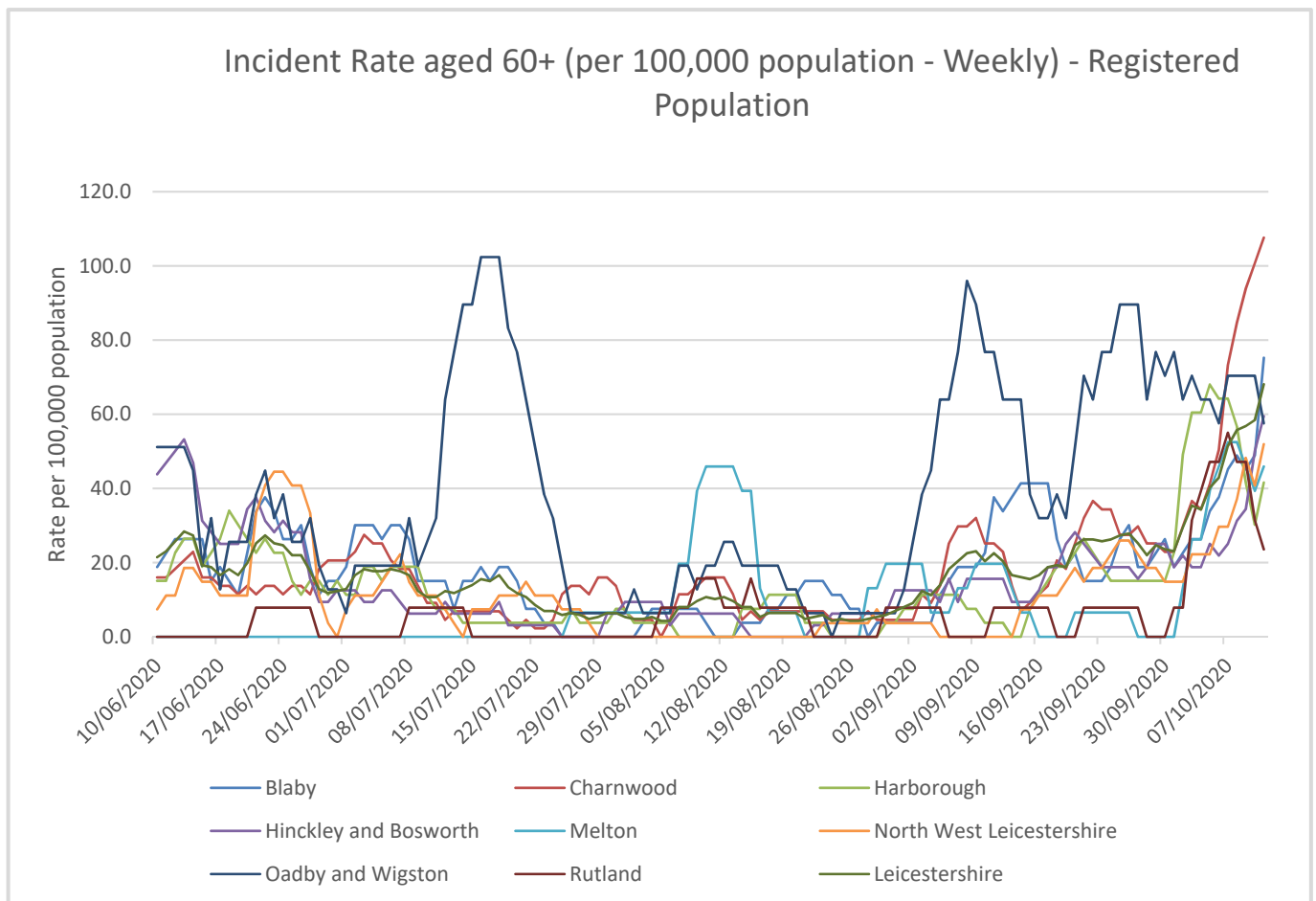
- The incidence rate for Covid-19 cases in people aged 17-21 in Leicestershire has been increasing since mid-September. As of 11<sup>th</sup> October, the rate for Leicestershire (1004.7 per 100,000 population) is higher than the national rate for this age group (622.7 per 100,000 population).
- The incidence rate of Covid-19 cases in people aged 17-21 in Charnwood has continued to rise since mid-September and peaked around the first week of October.
- The latest weekly incidence rate of Covid-19 cases for people aged 17-21 (as of 11<sup>th</sup> October) shows that Charnwood (1398.6 per 100,000 population) and Oadby & Wigston (1033.3 per 100,000 population) have higher rates than England (622.7 per 100,000). This equates to 243 and 41 confirmed cases in the last week for each of these districts respectively.





## 7. Charnwood has the highest weekly incidence rates of Covid-19 cases for people aged 60+ in the county.

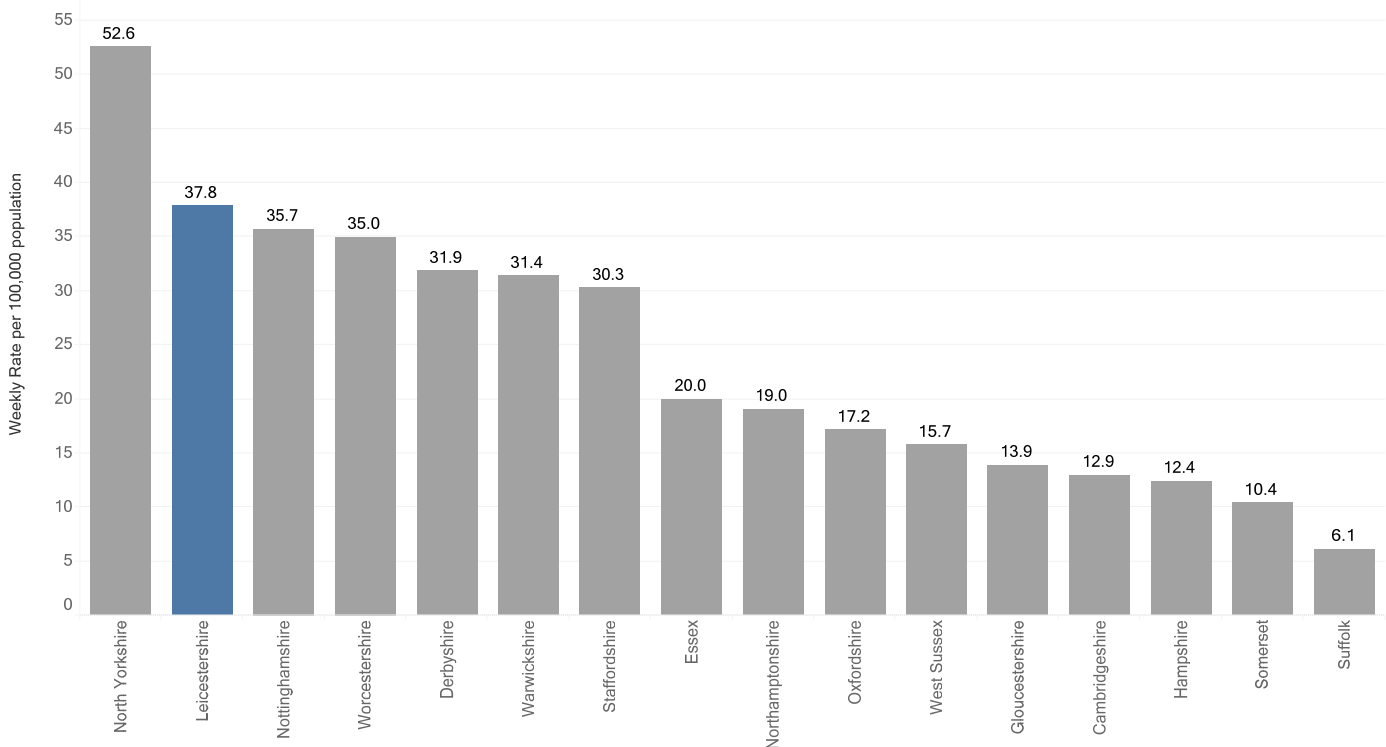
- The incidence rate for Covid-19 cases in people aged 60+ in Leicestershire has been increasing since the end of September. Although the rate for Leicestershire (68.1 per 100,000 population) remains below the national rate (97.1 per 100,000 population) as of 11<sup>th</sup> October, it should be noted that the national rate has also continued to increase.
- The incidence rate for Covid-19 cases in people aged 60+ in Charnwood district has continued to rise since the end of September. The latest weekly incidence rate of Covid-19 cases for people aged 60+ (as of 11<sup>th</sup> October) shows that Charnwood (107.6 per 100,000 population) is higher than the national rate (97.1 per 100,000) for this age group. This equates to 47 confirmed cases in Charnwood in the last week.



## 8. Leicestershire has the 2<sup>nd</sup> highest weekly rate of Covid-19 cases out of its CIPFA similar areas

Public Health England weekly Covid-19 rates have not been updated for week 41, the following narrative relates to week 39.

- There has been an increase in the weekly rate of Covid-19 cases in Leicestershire from 32.7 (per 100,000 population) in week 38 to 37.8 (per 100,000 population) in week 39. As of week 39 (21<sup>st</sup> September-27<sup>th</sup> September), Leicestershire is ranked 70<sup>th</sup> (highest) out of 149 upper tier local authorities and ranked the 2<sup>nd</sup> highest out of its CIPFA similar areas after North Yorkshire.
- The cumulative rate of Covid-19 cases in Leicestershire has increased from 623.8 (per 100,000 population) in week 38 to 669.4 (per 100,000 population) in week 39. As of week 39, Leicestershire is ranked 59<sup>th</sup> (highest) out of 149 upper tier local authorities and ranked 2<sup>nd</sup> highest out of its CIPFA similar areas after Northamptonshire.



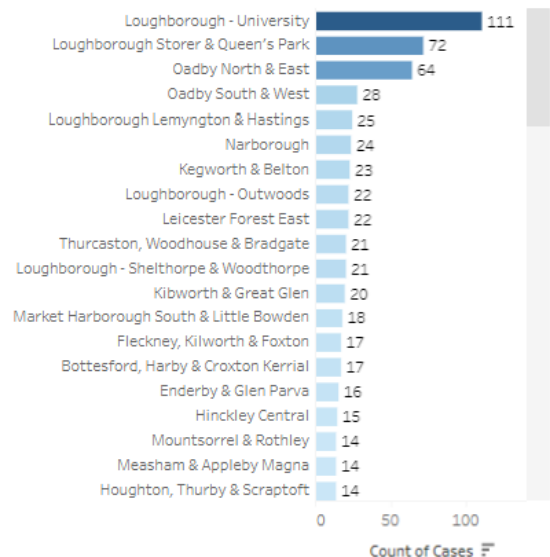
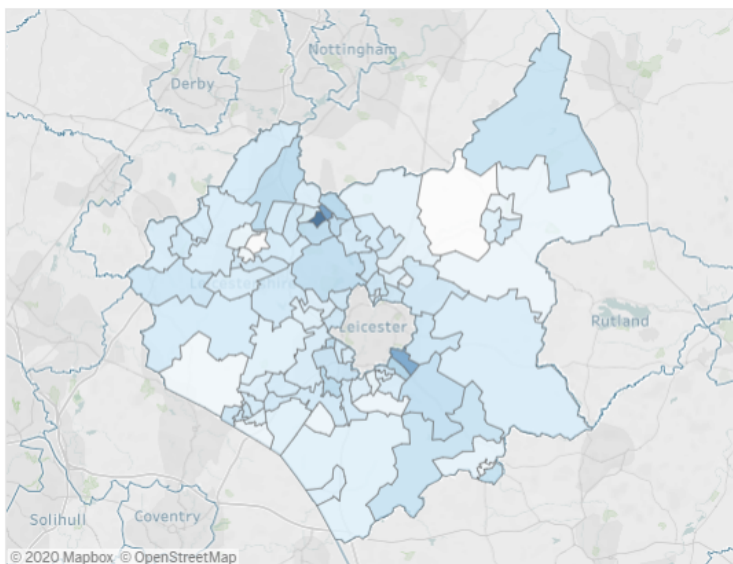
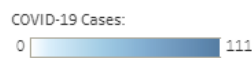
## 9. The MSOA with the highest count of Covid-19 cases was in Loughborough – University in the last week – University in the last week

- Between 4<sup>th</sup> October to 11<sup>th</sup> October (week 41), the MSOA with the highest count of confirmed cases of Covid-19 were found in Loughborough – University with 111 reported cases. This was followed by:
  - Loughborough Storer & Queen’s Park (72)
  - Oadby North & East (64)
  - Oadby South & West (28)
  - Loughborough Lemington & Hastings (25)
  - Narborough (24)
  - Kegworth & Belton (23)
  - Loughborough – Outwoods (22), Leicester Forest East (22)
  - Thurstaston, Woodhouse & Bradgate (21), Loughborough – Shelthorpe & Woodthorpe (21)
  - Kibworth & Great Glen (20)
- All other areas recorded below 20 cases in the last week.
- Areas that recorded between zero and two cases in the last week have been suppressed due to data disclosure and are represented as white in the map below.

Weekly Counts of Lab-confirmed Covid-19 cases by Middle Layer Super Output Area, Leicester, Leicestershire and Rutland, from Week 11 to Week 41



Local Authority:  Week:



## 10. District Level Summary

- **Oadby & Wigston** continues to have the highest rate of Covid-19 cases and deaths in the county. The rate of cumulative cases is significantly higher in comparison to the England average.
- The weekly counts of cases saw three peaks one in mid-May, one in mid-July and another at the beginning of September. There is also a peak in early October.
- The weekly counts of cases have decreased from 129 in w/c 5<sup>th</sup> October to 115 in w/c 12<sup>th</sup> October.
- The latest weeks data on death occurrences shows no deaths involving Covid-19 were recorded in Oadby & Wigston from week 27 to week 41.
- **Hinckley & Bosworth** has the fourth highest rate of Covid-19 cases and second highest rate of deaths in the county. The rate of cumulative cases is significantly lower compared to the England average.
- The weekly counts of cases saw a peak in late April with second peak on 8<sup>th</sup> June (57 cases). After this the weekly counts of cases had fluctuated, until the end of August and having since then shown an increasing trend. The latest weekly counts of cases have decreased, from 133 in w/c 5<sup>th</sup> October to 96 in w/c 12<sup>th</sup> October.
- The latest weeks data shows no deaths involving Covid-19 in Hinckley & Bosworth in week 41.
- **Blaby** has the third highest rate of Covid-19 cases in the county and third highest rate of deaths. The rate of cumulative cases is significantly higher in comparison to the England average.
- The weekly counts of cases saw a peak before the middle of May and a smaller peak at the beginning of June. Since then, a further peak has been witnessed in the beginning of October. The latest weekly counts of cases have decreased from 151 in w/c 5<sup>th</sup> October to 129 in w/c 12<sup>th</sup> October.
- The latest weeks data shows there were no deaths involving Covid-19 in Blaby in week 41.
- **Harborough** has the third lowest rate of Covid-19 cases and third lowest rate of deaths in the county. The rate of cumulative cases is significantly lower in comparison to the England average.
- The weekly counts of cases saw a peak towards the end of April and a smaller peak around mid-June, and there has been an increasing trend of cases since the end of August. The latest weekly counts of cases have decreased from 107 in w/c 5<sup>th</sup> October to 82 in w/c 12<sup>th</sup> October.
- The latest weekly counts of deaths involving Covid-19 shows no deaths were recorded in Harborough in the past nine weeks (week 33 to week 41).
- **Charnwood** has the second highest rate of Covid-19 cases and fourth highest rate of deaths in the county. The rate of cumulative cases is significantly higher in comparison to the England average.
- The weekly counts of cases saw a peak around mid-May, there has been increasing trend since the end of August. The latest weekly counts of cases have decreased from 448 in w/c 5<sup>th</sup> October to 380 in w/c 12<sup>th</sup> October.
- The latest weeks data shows no deaths involving Covid-19 in Charnwood in week 41.

- **Melton** has the second lowest rate of Covid-19 cases in the county and the second lowest rate of deaths in the county. The rate of cumulative cases is significantly lower than the England average.
- The latest weekly counts of cases have increased, from 45 in w/c 5<sup>th</sup> October to 51 in w/c 12<sup>th</sup> October.
- The latest weeks data shows one death involving Covid-19 was recorded in Melton in week 41, this occurred in a hospital setting.
  
- **North West Leicestershire** has the lowest rate of Covid-19 cases and lowest rate in deaths in the county. The rate of cumulative cases is significantly lower than the England average.
- The weekly counts of cases had shown a declining trend since the middle of June, however an increase in counts of cases has been witnessed since mid-September. The weekly count of cases have increased from 128 in w/c 5<sup>th</sup> October to 73 in w/c 12<sup>th</sup> October.
- The latest weekly counts of deaths involving Covid-19 shows no deaths were recorded in North West Leicestershire in the past 11 weeks (week 31 to week 41).

If you require information contained in this leaflet in another version e.g. large print, Braille, tape or alternative language please telephone: 0116 305 6803, Fax: 0116 305 7271 or Minicom: 0116 305 6160.

ਜੇ ਆਪ ਆ ਮਾਭਿਨੀ ਆਪਨੀ ਆਥਾਮਾਂ ਸਮਝਵਾਮਾਂ ਥੀੜੀ ਮਦਦ ਚੰਝਨਾਂ ਡੋ ਨੋ 0116 305 6803 ਨੰਬਰ ਪਰ ਫ਼ੋਨ ਡਰਥੀ ਅਨੇ ਅਮੇ ਆਪਨੇ ਮਦਦ ਡਰਵਾ ਆਵਥਾ ਡਰੀਥੁੰ.

ਜੇਕਰ ਤੁਹਾਨੂੰ ਇਸ ਜਾਣਕਾਰੀ ਨੂੰ ਸਮਝਣ ਵਿੱਚ ਕੁਝ ਮਦਦ ਚਾਹੀਦੀ ਹੈ ਤਾਂ ਕਿਰਪਾ ਕਰਕੇ 0116 305 6803 ਨੰਬਰ ਤੇ ਫ਼ੋਨ ਕਰੋ ਅਤੇ ਅਸੀਂ ਤੁਹਾਡੀ ਮਦਦ ਲਈ ਕਿਸੇ ਦਾ ਪ੍ਰਬੰਧ ਕਰ ਦਵਾਂਗੇ।

এই তথ্য নিজের ভাষায় বুঝার জন্য আপনার যদি কোন সাহায্যের প্রয়োজন হয়, তবে 0116 305 6803 এই নম্বরে ফোন করলে আমরা উপযুক্ত ব্যক্তির ব্যবস্থা করবো।

اگر آپ کو یہ معلومات سمجھنے میں کچھ مدد درکار ہے تو براہ مہربانی اس نمبر پر کال کریں  
0116 305 6803 اور ہم آپ کی مدد کے لئے کسی کا انتظام کر دیں گے۔

假如閣下需要幫助，用你的語言去明白這些資訊，請致電 0116 305 6803，我們會安排有關人員為你提供幫助。

Jeżeli potrzebujesz pomocy w zrozumieniu tej informacji w Twoim języku, zadzwoń pod numer 0116 305 6803, a my Ci dopomożemy.

Strategic Business Intelligence Team  
Strategy and Business Intelligence Branch

Chief Executive's Department  
Leicestershire County Council  
County Hall  
Glenfield  
Leicester  
LE3 8RA  
[ri@leics.gov.uk](mailto:ri@leics.gov.uk)  
[www.lsr-online.org](http://www.lsr-online.org)